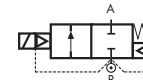


## 2/2 WAY PILOT OPERATED SOLENOID VALVE, G 1/4" ÷ G 1"

### COMMON FEATURES

- Media:** hot water and steam
- Media temperature:** +10°C ÷ +150°C
- Ambient temperature:** -10°C ÷ +70°C
- Body material:** brass (CW617N EN 12165)
- Orifice material:** stainless steel (1.4305 EN 10088/AISI 303)
- Operator material:** stainless steel
- Operator seal material:** EPM PX 70/80
- Diaphragm material:** PTFE
- Main seal material:** EPM PX 70/80
- Protection class:** IP 65 (with connector and gasket)

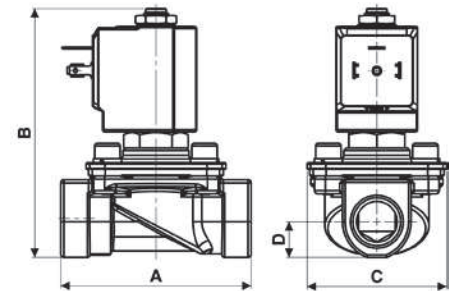
### TYPE: D887÷D892



Normally Closed



DIMENSIONS & WEIGHTS		D887	D888	D889	D890	D892
<b>G connection</b>	[ISO 228]	1/4"	3/8"	1/2"	3/4"	1"
<b>A</b>	[mm]	75	75	75	85	82
<b>B</b>	[mm]	108	108	108	108	108
<b>C</b>	[mm]	55	55	55	55	55
<b>D</b>	[mm]	14	14	14	21.5	21.5
<b>weight</b>	[kg]	0.55	0.5	0.5	0.8	0.8



VALVE	nominal Ø	flow rate Kvs	OPD			COILS	
			min.	max. AC	max. DC	class 'H' only	
code	[mm]	[l/min]	[barg]	[barg]	[barg]	code	[Volts/Hz]
<b>D887DPV</b>	11.5	35	0.3	4.5	4.5	72Z1	24v DC
<b>D888DPV</b>	11.5	50	0.3	4.5	4.5	7201	24v 50/60Hz
<b>D889DPV</b>	11.5	55	0.3	4.5	4.5	7401	110v 50Hz - 120v 60Hz
<b>D890DPV</b>	11.5	70	0.3	4.5	4.5	7601	200v 50Hz - 220v 60Hz
<b>D892DPV</b>	11.5	75	0.3	4.5	4.5	7701	230v 50Hz - 240v 60Hz

### D887÷D892 - PTFE seal, NC -

- Coil power: AC 18va (holding)
- AC 36va (inrush)
- DC 22w

